



995 Utah St  
Berwick, LA 70342  
985-385-3310

**GSA** Contract Holder  
GSA # 47QSWA18D0025  
Certified Small Business  
HUB ZONE #57933

**UNGM #650694**  
TAX ID #721029676  
DUNS # 164505844  
UE# GTH2LWXTADA3  
CAGE CODE #3TVGT

Quote Date: 06.27.2022  
To: Frisco, Colorado  
Attn: Logan Snyder  
Email: [LoganS@TownofFrisco.com](mailto:LoganS@TownofFrisco.com)

Expiration Date: 07.25.2022

## **30' x 10' 3 Sided Center Console V Bottom Work Barge Model: 30120 3CCVB**

### **HULL SPECIFICATIONS:**

Length: 30' + gill bracket = 32' 6" LOA (motor guard not included in LOA)  
Bottom: 9' (1/4")  
Sides: 30" (1/4")  
Beam: 10' (approximately)

Hull consists of all 5086 marine grade alloy aluminum (bottom, sides and transom)  
Fully decked over hull – all 3/16" tread plate decking  
Self-bailing design with overboard deck drains port & starboard  
1 1/2" sch/40 aluminum pipe handrails – 36" tall – 6" kickplate – bow to stern & rear transom  
Port & starboard handrails to be removable in 8' sections  
4 – Heavy duty mooring cleats – (port & starboard – bow & stern)  
Transom designed for dual outboard engines 25" shaft

### **HANKO'S HEAVY DUTY – UNMATCHED RIB STRUCTURE:**

#### **Longitudinal (length of the hull)**

4 – 4" x 1" aluminum angle fully welded to bottom plating – lifting strakes  
8 – 2" x 1/2" Flat bar stringers running the length of the boat between each lifting strake  
6" x 3/8" center line keel plate

#### **Transverse (width of the hull)**

2 – Full 3/16" bulkheads (bow section – mid ship)  
4" x 2" x 1/4" angle attached to the stringers on 16" center – floating rib design  
3" x 2" x 1/4" tubing on 16" centers attached to sides – deck supports  
3" x 1/4" flat bar wall supports 2 per rib section every other rib section  
2" x 2" x 3/16" angle uprights connecting top decking rib frames every other rib framing  
3" channel keel gussets on every other rib framing  
2" x 2" x 1/8" square tubing in lower rear section of hull

**38 Years of successful boat building experience & design!**

## **FLOOR PLAN:**

3" heavy duty rubber rail around top outside gunnel of barge & midway of side  
2 – 3" heavy duty rubber push knees flush with top decking  
Keyway: 24" depth – 24" aft width – 36" bow width  
Hydraulic crane base centerline of boat – reinforced inside of hull  
Electric winch base – approximately 1' height off the deck – reinforced to the deck of the work barge  
Aluminum access hatch – front compartment inspection  
Flush hatch with overboard drains – dry storage access  
3 sided center console – 3/16" sidewall and console construction with 1/8" aluminum top  
Instrument box – grabrails port & starboard  
Custom leaning post with dry storage – designed for an ice chest to slide underneath  
80 gallon fuel tank located underneath rear decking  
Flush hatch with overboard drains – rear compartment/fuel tank access  
Stern lower compartment to have pressure tested 1/8" flooring installed with lower sump hole  
Transom designed and enforced for dual 25" shaft engine  
Full width tread plate gill bracket  
2" aluminum motorguard

## **ACCESSORIES:**

1/4" safety glass installed  
Navigational lights – LED running lights and white all-round light  
Hydraulic steering system  
Stainless steel steering wheel  
Fuel system (fittings, valves, hoses and water separator)  
Fuel sender and dash mounted gauge  
6 gang electric control panel  
3 – 1100 gph automatic bilge pumps with manual override switch on dash  
Remote controlled LED Go light spotlight  
LED overhead cabin light  
4 – LED flood lights – 2 forward facing & 2 rear facing mounted to cabin  
Heavy duty electric windshield wiper  
Electric trumpet style horn  
12V USB power socket  
Marine battery for crane operation with 1 bank charger  
2 – Marine cranking battery  
Battery cases with holding straps  
2 battery selector switches – on/off  
Vinyl cushion for leaning post  
2 – electric winches with 20' of wire rope  
2 – magnesium anodes on transom  
Gaskets for dry boxes and all raw edges to have trim gasket  
All wires to be incased in plastic split loom to prevent electrical problems  
Stainless steel fasteners for all hardware attachments

### **2,500 LB CRANE OPTION: Tiger Crane (available) crane specs at bottom of quote**

This is the original crane that was bid for this boat – I took this crane price out of the boat price and made it an available option price, so the price difference of the cranes is made available

### **6,500 LB CRANE OPTION: Tiger Crane (14 week lead time) crane specs at bottom of quote**

In lieu of the 2,500 lb capacity crane the work barge would be equipped with a 6,500 lb capacity crane

### **6,000 LB CRANE OPTION: Auto Crane (32 week lead time) crane specs at bottom of quote**

In lieu of the 2,500 lb capacity crane the work barge would be equipped with a 6,000 lb capacity crane

### **OUTBOARD MOTOR OPTIONS: HONDA – SUZUKI**

Standard binnacle controls with key switches – deluxe control cables – tachometer – stainless steel propeller - Installed and test run in local water way to check, verify operation & propeller sizing

### **TRAILER:**

Heavy duty tandem axel boat trailer – brakes on 1 axle  
10,000 lbs. capacity with 15” tires  
Drive on board setup – Aluminum I beam construction  
Spare & carrier – adjusted and setup for proposed boat

### **WARRANTIES:**

Hull: Hanko's Metal Works Inc. carries a **Five (5) year** warranty against any manufacture or workmanship defects. Most all accessories installed carries a 12-month factory warranty. Boat trailer manufacturer carries a 24-month warranty

### **TERMS:**

Hanko's Metal Works Inc. requires a written and signed purchase order with the balance due on completion/pickup. **Net 30 days.** Authorized government representatives shall have access to inspect the vessel prior to its delivery at the place of construction.

**BID PRICE:**

<b>30120 3CCVB:</b>	<b>\$ 77,500.00</b>
<b>2,500 lb Crane Option: (Tiger Crane)</b>	<b>\$ 15,600.00</b>
<b>6,500 lb Crane Option: (Tiger Crane)</b>	<b>\$ 33,100.00</b>
<b>6,000 lb Crane Option: (Auto Crane)</b>	<b>\$ 36,900.00</b>
<b>Dual Motor Options: 200 Honda (2yr warranty)</b>	<b>\$ 37,600.00</b>
<b>200 Suzuki (1yr warranty)</b>	<b>\$ 37,200.00</b>
<b>250 Honda (2yr warranty)</b>	<b>\$ 42,300.00</b>
<b>250 Suzuki (1yr warranty)</b>	<b>\$ 45,200.00</b>
<b>Subtotal:</b>	<b>\$ _____</b>
<b>8.9% sales taxes if applicable:</b>	<b>\$ _____</b>
<b>Boat &amp; motor total including taxes:</b>	<b>\$ _____</b>
<b>Trailer:</b>	<b>\$ 10,300.00</b>
<b>Total bid:</b>	<b>\$ _____</b>

## DELIVERY DATE:

Approximately **three (3) to five (5)** months from the date the P.O. is received till pickup/delivery.

## **Depending on workload at the time of deposit!**

Located in southern Louisiana, Hanko's Metal Works Inc. is aluminum custom boat builder and have enjoyed over 38 years of successful boat building with thousands of satisfied customers. We are a family owned and operated business since 1985.

We offer a large variety of boats such as: shallow water flat bottom bateaus, smooth riding Performance V hulls, Lift series padded hulls, flat and V bottom workboats and custom-built barges.

In our years of experience, we have manufactured various types of aluminum fabrication serving the recreational, commercial and oilfield industry such as:

Paint lockers	Worktables	Containment boxes	Wheelhouses
Stair ways	Gang ways	Ladders	Lift baskets
Storage boxes	Fuel tanks	Day tanks	Tool lockers and boxes
Manifold tanks	Metrology tables	Bar-B-Que Pits	Steel & Alum lettering
Holding tanks	Dynamite boxes	Burn tanks	Cabinets
Boiling pots	Steps	Boot lockers	Davits
A-frames	Tow post	Chemical lockers	Cabins
Boat doors	Mobile kitchens	Motor stands	Skimmer frames
Hose racks	Transfer manifolds	Cooking utensils	Various guards & covers

Our detail, facilities, experience, and craftsmanship produce a finished product that is second to none. Known throughout the southern gulf states as the most rugged and durable boats built. Hanko's has built a reputation for being heavy duty and maintenance free. Hanko's has set the standard in the Louisiana aluminum boat building industry. JUST ASK AROUND --- WE ARE LOUISIANA'S #1 CUSTOM BOAT BUILDER!

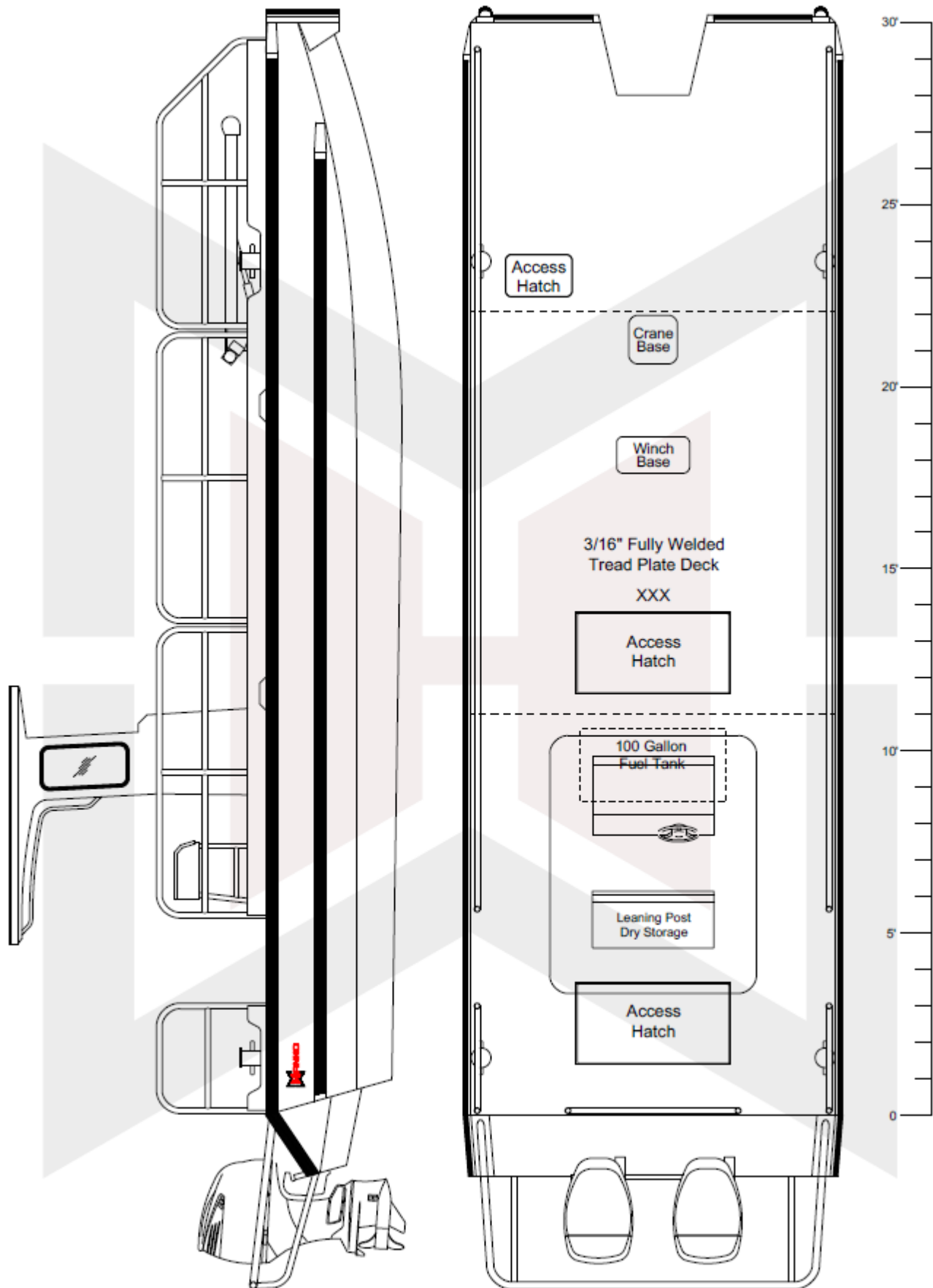
Hanko's has teamed up with **Suzuki – Honda – Yamaha – Mercury** to provide proven and reliable boat and motor packages. If we do not get the chance to build the boat, we would still like the chance to earn your outboard business. Full-service mechanic shop to service all outboard brands.

Hanko's Metal Works Inc. has a workboat rental fleet and brokers workboats to meet the needs of our customers. You are invited to visit our new first class 30,000 square foot facility located in Berwick, La. We have a full marine store with commercial and recreational products.

Thank you for your consideration

*HARRY K. HOFFPAUER*

Drawing shown is to scale and is the general arrangement of the vessel





## 2,500 lb Crane Option:



### STANDARD FEATURES

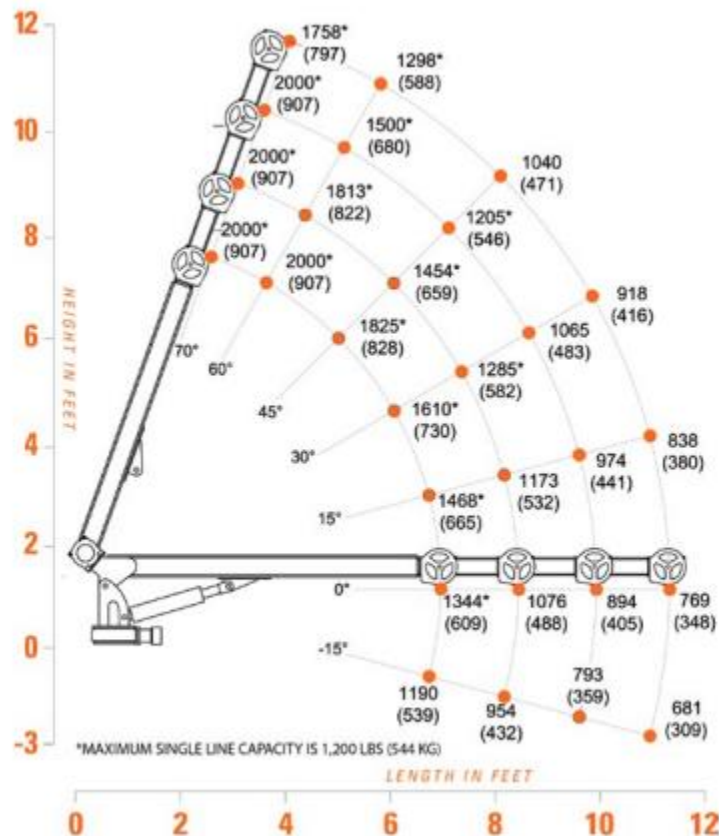
- 2,000 lb lift capacity
- 11 ft of manual reach
- 3 hydraulic + 1 12V DC functions
- Wireless controls
- -15° to 70° power elevation
- 400° powered rotation

### OPTIONS

- Tall base
- 25 ft tethered remote control
- Anti-two-block

### SPECIFICATIONS

- 8,500 ft-lb crane rating
- 8,900 ft-lb max moment rating
- 11' ft lifting height
- 6.5-8-9.5-11 ft manual boom extension
- 23.5 FPM winch speed
- 3/16" x 40 ft cable
- 425 lbs operating weight
- 11" Ø mounting space required
- 26" storage height
- 91" storage length
- 10,200 lb min chassis GVW required
- -15° boom angle



## 6,500 lb Crane Option:



### STANDARD FEATURES

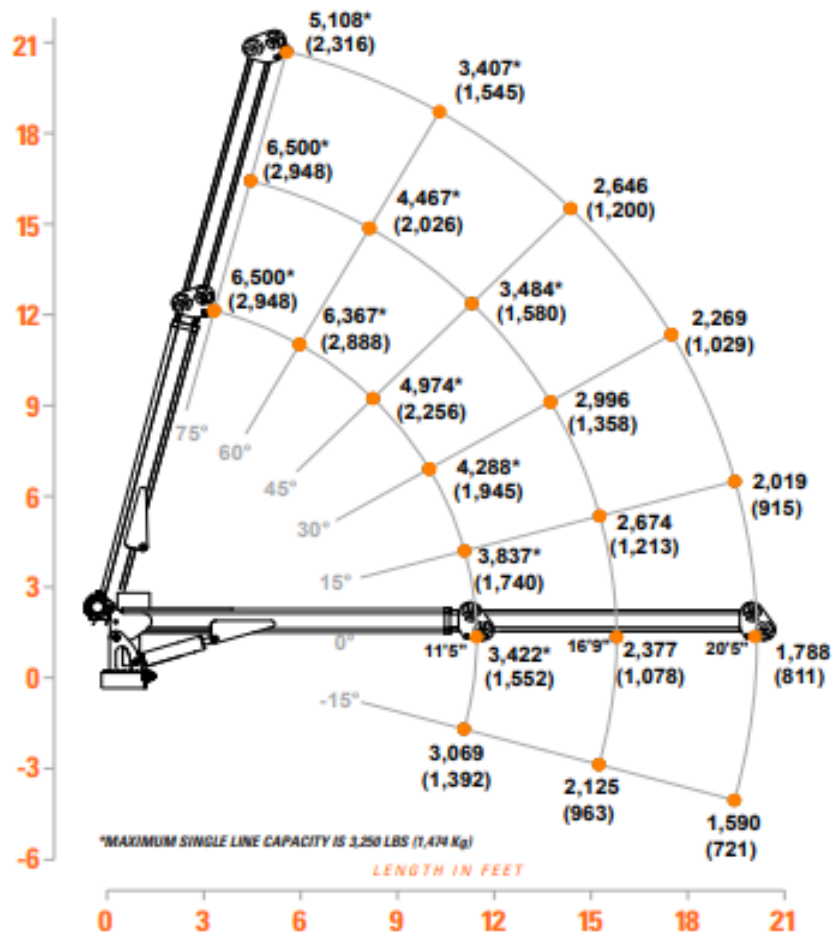
- 6,500 lb lift capacity
- 21 ft of hydraulic reach
- Hex boom with low profile jib head
- 3 hydraulic + 1 12V DC functions
- Wireless remote

### OPTIONS

- Wireless three-function proportional control
- LED boom tip light
- 25-ft corded remote

### SPECIFICATIONS

- 40,000 ft-lb crane rating
- 43,200 ft-lb max moment rating
- 18.5 ft lifting height
- 12 ft to 21 ft reach with one hydraulic boom extension
- 36 FPM winch speed
- 3/8" x 120 ft cable
- 400° rotation with sealed turret
- 1500 lbs operating weight
- 29" Ø mounting space required
- 38.25" storage height
- 160" storage length
- 14,500 lb min chassis GVW required
- -15° boom angle





6,000 lb Crane Option:

EHC-6



Capacity	6,000 lbs (2,721 kg) at 6.0 ft (1.83 m)
Rating	36,000 ft-lb (5.0 t-m)
Length	20.3 ft (6.2 m) fully extended
Weight	1,670 lb (757 kg)
Chassis	Class 4 (14,500 GVWR minimum)
Body	Titan 38

6006EH

